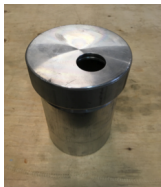


HEINTZ INDUSTRIES LTD

CENTRES

We produce all of our steel centres in house. We can accommodate centres that are 1" or larger in diameter.



F

- A. 1" Sch40, no threaded ends, 4 1/8" long (\$10)
- B. 1" Sch40, threaded one end, 6" long (\$15)
- C. 1" Sch40, threaded one end, 7" long (\$17)
- D. 1 1/2" Sch40 centre pipe 4 1/8" lg, with 1" npt half collar both ends (\$40)
- E. 1 1/2" Sch40 centre pipe 5" lg, with 1" npt half collar one end (\$30)
- F. Special Order 4" Aluminum centre with cap (\$90)

CELLS

All of our cells are produced by Ben on our custom engineered machine. We use .013" X 4" 3003 H14 aluminum ribbon and inspect each cell for quality control. We can make any size between 6" and 60".

SIZE	PRICE	SIZE	PRICE	SIZE	PRICE	SIZE	PRICE
6"	\$29	21"	\$248	37"	\$749	52"	\$1470
7"	\$36	22"	\$272	38"	\$790	53"	\$1527
8"	\$45	23"	\$296	39"	\$832	54"	\$1585
9"	\$54	24"	\$321	40"	\$874	55"	\$1643
10"	\$64	25"	\$348	41"	\$918	56"	\$1703
11"	\$75	26"	\$375	42"	\$963	57"	\$1764
12"	\$88	27"	\$404	43"	\$1009	58"	\$1826
13"	\$101	28"	\$434	44"	\$1056	59"	\$1890
14"	\$116	29"	\$464	45"	\$1104	60"	\$1954
15"	\$132	30"	\$496	46"	\$1153		
16"	\$148	31"	\$529	47"	\$1203		
17"	\$166	32"	\$563	48"	\$1254		
18"	\$185	33"	\$598	49"	\$1306		
19"	\$205	34"	\$634	50"	\$1360		
20"	\$226	35"	\$672	51"	\$1414		



All prices are valid for 90 days and are subject to change.

Heintz Industries Ltd.

"Where We Treat You Like Family"

51338 Range Road 223, Sherwood Park AB T8C 1H2

heintzindustries.com